

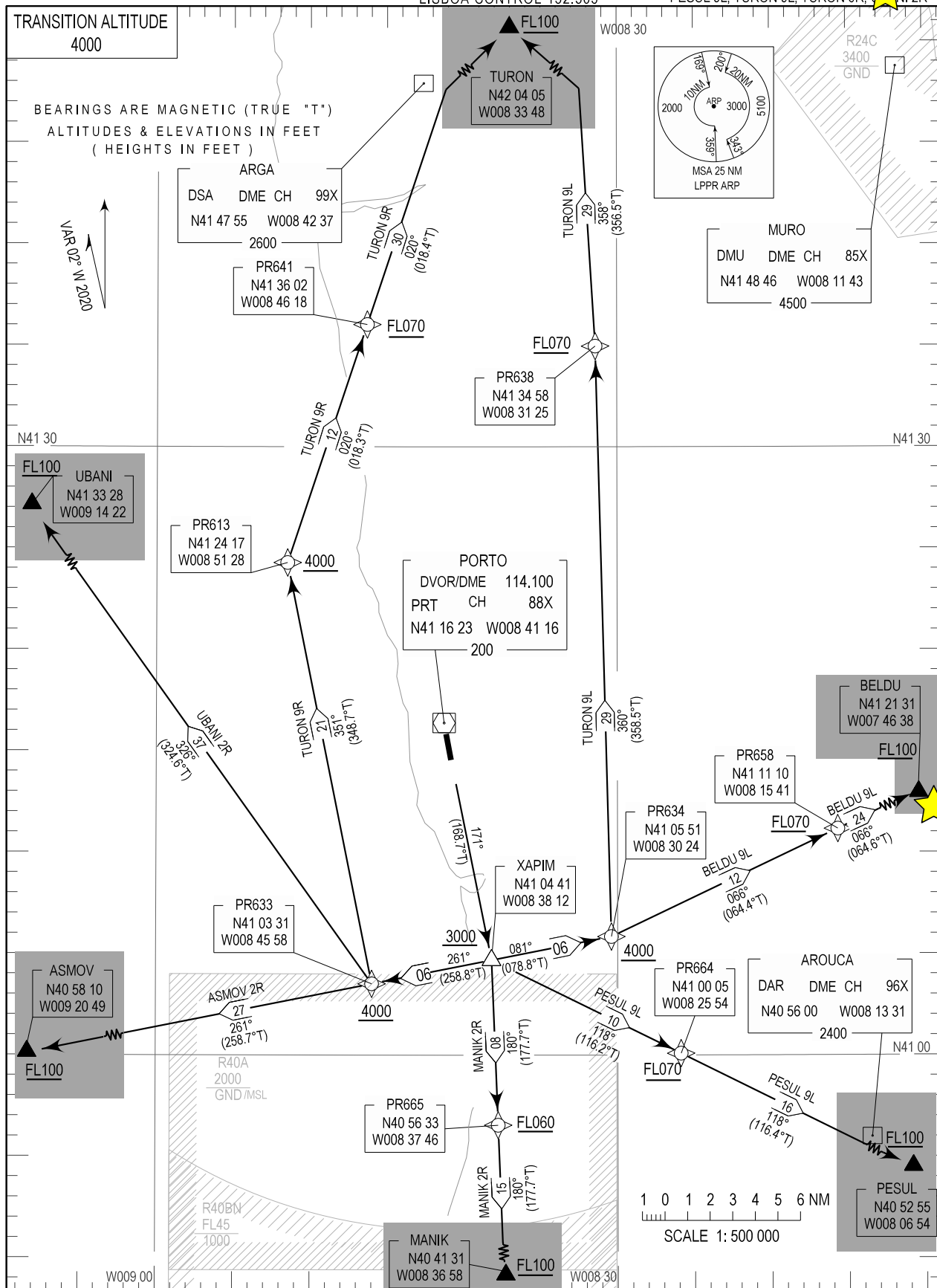
STANDARD DEPARTURE CHART -  
INSTRUMENT (SID) - ICAO

PORTO DEP INFORMATION 121.680  
PORTO TOWER 118.005  
PORTO APPROACH 120.910  
LISBOA CONTROL 132.305


PORTO, Francisco Sá Carneiro (LPPR)

RNAV RWY 17

ASMOV 2R, BELDU 9L, MANIK 2R  
PESUL 9L, TURON 9L, TURON 9R, NI 2R



SID Procedure Coding Table

Path Terminator	Waypoint			Course/Track MAG(True)	Dist NM	Turn Direction	Constraints		Nav Specs	Remarks
	Identifier	Flyover	Coordinates				Level	Speed		
Porto SID RNAV 1 RWY 17 – BELDU 9L										
CF	XAPIM	-	410441.12N 0083811.55W	171 (168.7)	-	-	+3000ft	-	RNAV 1	
TF	PR634	-	410550.74N 0083024.43W	081 (078.8)	6.00	Left	+4000ft	-	RNAV 1	
TF	PR658	-	411109.65N 0081540.82W	066 (064.4)	12.33	Left	+FL070	-	RNAV 1	
TF	BELDU	-	412130.63N 0074638.02W	066 (064.6)	24.22	-	+FL100	-	RNAV 1	
PORTO SID RNAV 1 RWY 17 – ASMOV 2R										
CF	XAPIM	-	410441.12N 0083811.55W	171 (168.7)	-	-	+3000ft	-	RNAV 1	
TF	PR633	-	410330.97N 0084558.39W	261 (258.8)	6.00	Right	+4000ft	-	RNAV 1	
TF	ASMOV	-	405809.81N 0092049.33W	261 (258.7)	26.92	-	+FL100	-	RNAV 1	
PORTO SID RNAV 1 RWY 17 – PESUL 9L										
CF	XAPIM	-	410441.12N 0083811.55W	171 (168.7)	-	-	+3000ft	-	RNAV 1	
TF	PR664	-	410005.29N 0082553.92W	118 (116.2)	10.38	Left	+FL070	-	RNAV 1	
TF	PESUL	-	405255.32N 0080654.37W	118 (116.4)	16.08	-	+FL100	-	RNAV 1	
PORTO SID RNAV 1 RWY 17 – MANIK 2R										
CF	XAPIM	-	410441.12N 0083811.55W	171 (168.7)	-	-	+3000ft	-	RNAV 1	
TF	PR665	-	405632.70N 0083745.69W	180 (177.7)	8.14	Right	+FL060	-	RNAV 1	
TF	MANIK	-	404130.65N 0083658.21W	180 (177.7)	15.04	-	+FL100	-	RNAV 1	
PORTO SID RNAV 1 RWY 17 – TURON 9L										
CF	XAPIM	-	410441.12N 0083811.55W	171 (168.7)	-	-	+3000ft	-	RNAV 1	
TF	PR634	-	410550.74N 0083024.43W	081 (078.8)	6.00	Left	+4000ft	-	RNAV 1	
TF	PR638	-	413457.82N 0083124.66W	360 (358.5)	29.11	Left	+FL070	-	RNAV 1	
TF	TURON	-	420404.53N 0083348.30W	358 (356.5)	29.15	-	+FL100	-	RNAV 1	
Porto SID RNAV 1 RWY 17 – TURON 9R										
CF	XAPIM	-	410441.12N 0083811.55W	171 (168.7)	-	-	+3000ft	-	RNAV 1	
TF	PR633	-	410330.97N 0084558.39W	261 (258.8)	6.00	Right	+4000ft	-	RNAV 1	
TF	PR613	-	412417.18N 0085128.48W	351 (348.7)	21.17	Right	+4000ft	-	RNAV 1	
TF	PR641	-	413601.74N 0084618.00W	020 (018.3)	12.36	Right	+FL070	-	RNAV 1	
TF	TURON	-	420404.53N 0083348.30W	020 (018.4)	29.55	-	+FL100	-	RNAV 1	
PORTO SID RNAV 1 RWY 17 – UBANI 2R										
CF	XAPIM	-	410441.12N 0083811.55W	171 (168.7)	-	-	+3000ft	-	RNAV 1	
TF	PR633	-	410330.97N 0084558.39W	261 (258.8)	6.00	Right	+4000ft	-	RNAV 1	
TF	UBANI	-	413328.27N 0091422.27W	326 (324.6)	36.80	Right	+FL100	-	RNAV 1	

Porto SID RNAV 1 RWY 17

Designator	Route	After Take-off		Remarks
		Climb to ALT/FL	Contact	
BELDU9L	After take-off proceed to XAPIM. Turn left to PR634 - PR658 - BELDU.	FL100	Porto Approach 120.910 MHZ	
ASMOV2R	After take-off proceed to XAPIM. Turn right to PR633 - ASMOV.			
PESUL9L	After take-off proceed to XAPIM. Turn left to PR664 - PESUL.			
MANIK2R	After take-off proceed to XAPIM. Turn right to PR665 - MANIK.			
TURON9L	After take-off proceed to XAPIM. Turn left to PR634 - PR638 - TURON.			
TURON9R	After take-off proceed to XAPIM. Turn right to PR633 - PR613 - PR641 - TURON.			
UBANI2R	After take-off proceed to XAPIM. Turn right to PR633 - UBANI.			